



3 Priory Mews Guildford Street, Chertsey, KT16 9BP

£1,250 PCM

3 Priory Mews Guildford Street, Chertsey, KT16 9BP

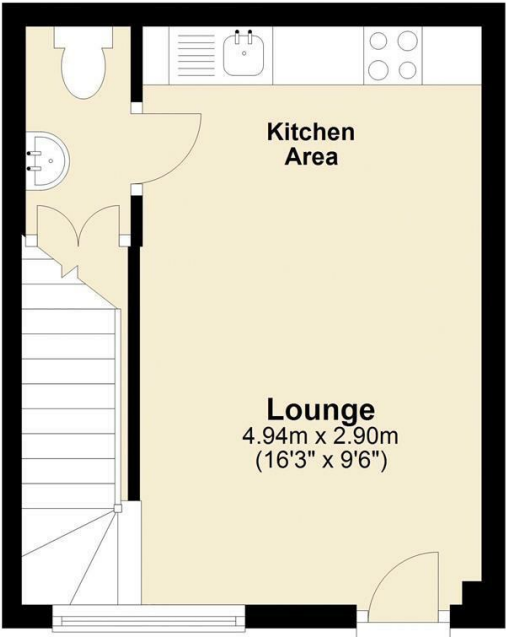
This one bedroom un-furnished house is quietly tucked away in a small gated development in the heart of Chertsey, just a short walk to the town shops and about 5 minute walk to Chertsey main-line train station. The property has a lounge open-plan to a fitted kitchen with white goods. Upstairs, off the landing, is the bathroom and a double bedroom. There is double glazing, underfloor heating and one allocated parking space.



Floor Plan

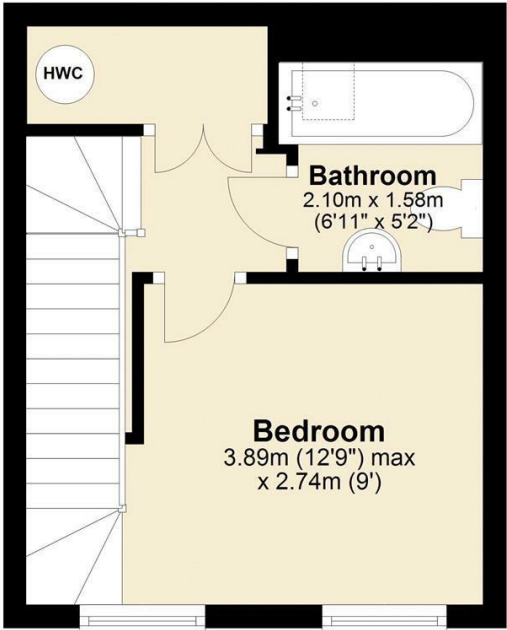
Ground Floor

Approx. 19.3 sq. metres (207.5 sq. feet)



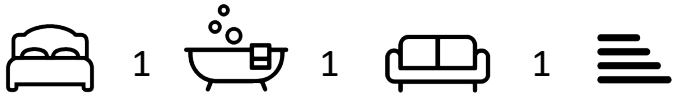
First Floor

Approx. 19.2 sq. metres (206.8 sq. feet)



Features

10 St Judes Road, Englefield Green, Surrey TW20 0BY
Tel 01784 433696
sales@aspenestateagents.co.uk



Tenure - Council Tax Band - C

